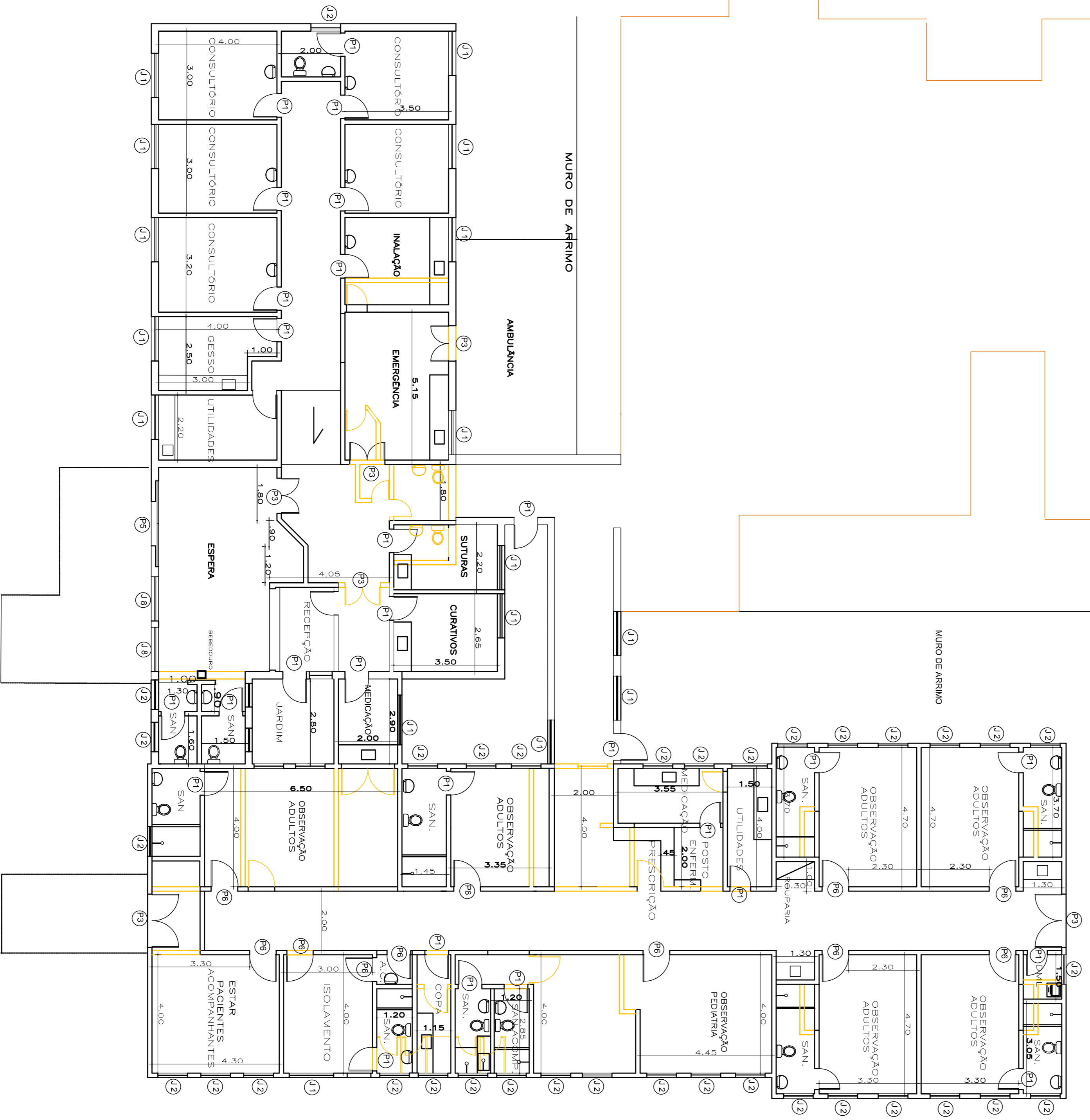
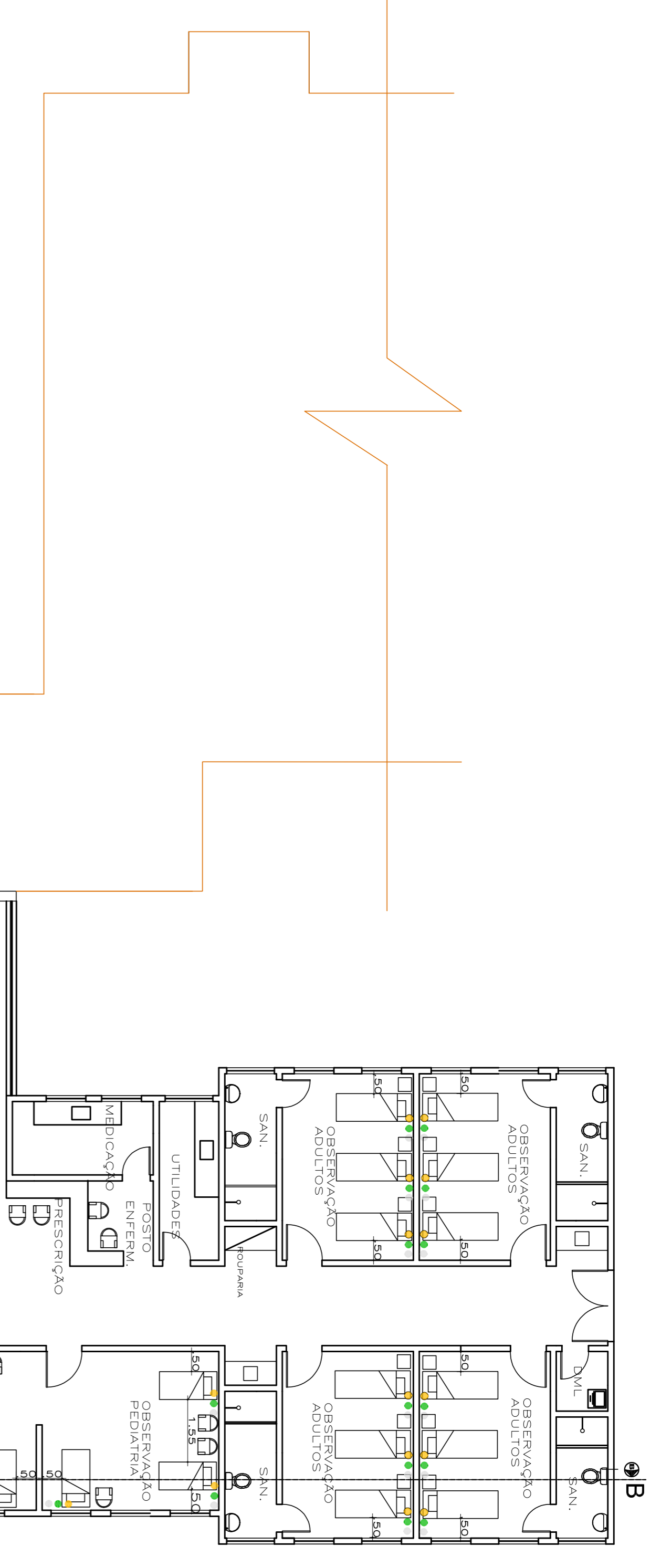


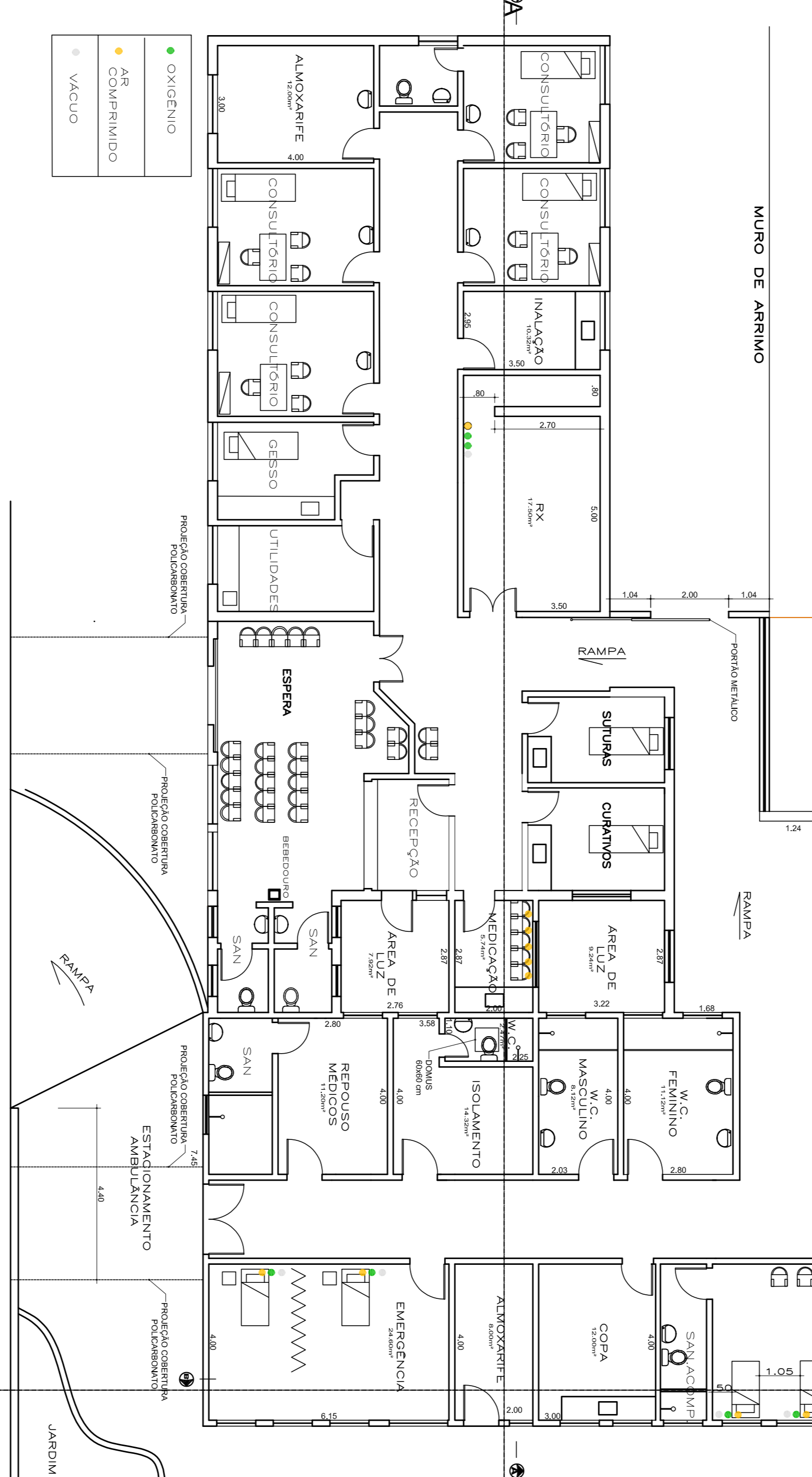
FUTURA AMPLIAÇÃO

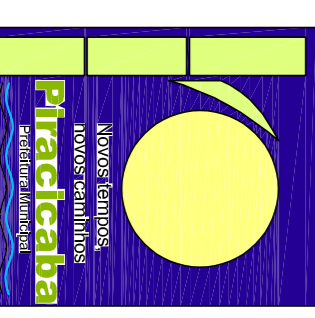


PAVIMENTO TERREO



PAVIMENTO TERREO - SITUAÇÃO PRETENDIDA/LAY-OUT





PREFEITURA MUNICIPAL DE PIRACICABA
POLICLINICA SANTA TEREZINHA

1:100

SECRETARIA MUNICIPAL DE SAÚDE

002_03

002_02_0006